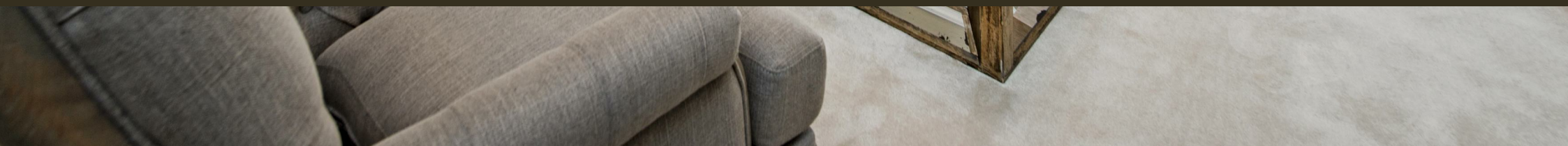




Marsham Street, Westminster
London SW1P

GARTONJONES.COM



Marsham Street, Westminster
London, SW1P

GARTON JONES.COM

49 Marsham Street Lettings:
London +44 (0) 20 7340 0480
SW1P 3DP westminster@gartonjones.com
www.gartonjones.com

£1,700 Per Week

A beautifully presented two bedroom apartment located on the 5th floor of this sought after iconic Art Deco building the heart of Westminster. The apartment has been stylishly refurbished throughout with many high specification details which include Philip Jefferies wallpaper throughout, mood lighting, integrated audio and video sources and underfloor heating with nest wireless thermostat. This bright and spacious accommodation measures at approximately 1392 square feet (125.6 sq.m) and comprises of a reception room with dining area, a contemporary fitted separate kitchen with Miele appliances, master bedroom benefiting from a walk in wardrobe with en-suite luxury bathroom, further large bedroom with bespoke fitted wardrobes, further bathroom with bronze bathroom fittings and marble tiles. Residents of Westminster Gardens will benefit from a 24 hour concierge and access to a communal roof terrace with views of Parliament. Marsham Street is within walking distance to the shopping facilities of Victoria Street as well as the excellent transport services of Westminster and Pimlico as well as The River Thames, Houses of Parliament and Tate Gallery which are all on the door step. Garton Jones are located on the same road so are readily available for viewings.

** Please note that some furniture may differ from the images

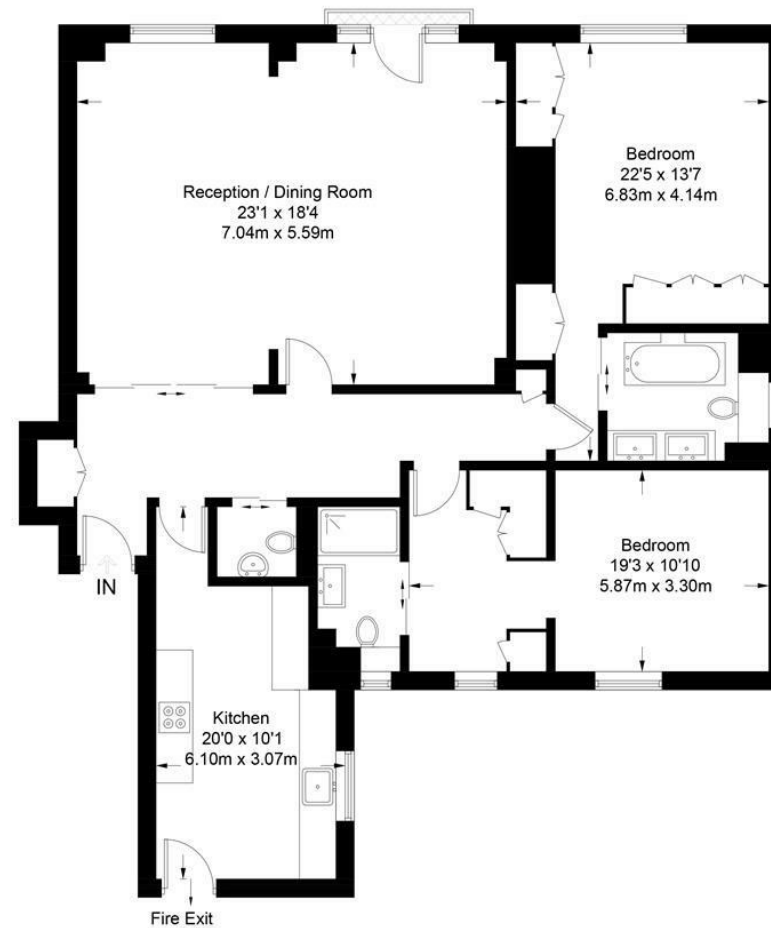
Minimum Term 12 months
Deposit 6 weeks
Council Tax Band G (London Borough of Westminster)
EPC Rating C (70)

- Two Bedroom Luxury Apartment
- Stunning Bespoke Interior Finish Throughout
- Open Plan Reception Room With Dining Area
- Smart Integrated Fitted Kitchen
- Two Luxury Bathrooms (En-suite)
- Walk In Wardrobe
- 24 Hour Concierge
- Residents Communal Roof Terrace With Views of Parliament
- Moments From St James Park, Westminster & Pimlico Transport Links



Westminster Gardens

Approximate Gross Internal Area = 1392 sq ft / 129.32 sq m



Fifth Floor

Not to scale, for guidance only and must not be relied upon as a statement of fact.
All measurements and areas are approximate only and have been prepared in
accordance with the current edition of the RICS Code of Measuring Practice.

